



214 INDUSTRIAL PARK ROAD
BEAVER, WV 25813-USA
PHONE: 304-252-6243 \ FAX: 304-252-6292

INSTALLATION, AND MAINTENANCE INSTRUCTIONS MODEL EX-36580-16

Model EX-36580-16

Camera Fixture with M25-1.5 Gland Entry

Rated IP66

Model: EX-36580-16 IP/POE Camera

Electrical Rating 12V, or PoE 44-57V at 3.12 Watts.

Ambient Temperature: $-20^{\circ}\text{C} \leq T_{\text{amb}} \leq 50^{\circ}\text{C}$

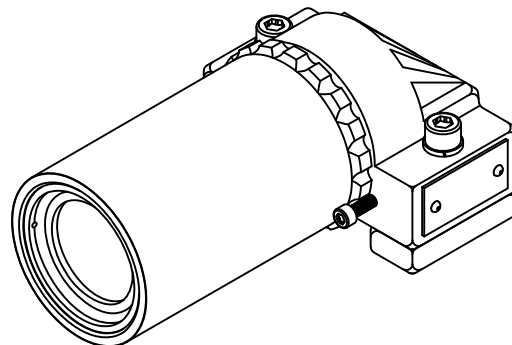


2776

UK
CA 2503



I M2 Ex db I Mb ($-20^{\circ}\text{C} \leq T_{\text{amb}} \leq 50^{\circ}\text{C}$)



Purpose of these Instructions:

When work is done in areas of explosion risk, the safety of persons and equipment depends on adherence to relevant safety regulations. Installation and maintenance personnel working on this equipment hold serious responsibility, and must have detailed knowledge of applicable regulations and requirements. These instructions present a condensed summary of the most important safety guidelines intended to enhance conformity to the appropriate regulations with which the persons responsible must comply.

Installation for Safe Use:

To minimize the risk of ignition by electrical apparatus in hazardous areas, efficient installation, inspection, and maintenance of the apparatus and system(s) are essential. All work must be carried out by suitably trained personnel in accordance with the prevailing code of practice.

Fixture Installation:

1. Preparation for installation:
 - A. Select a suitable location for the camera with regard to area covered by the camera.
 - B. The mounting surface should be flat steel, suitable to support the weight of the camera.
 - C. Mark the mounting surface and ends of each mounting foot for paint removal. (See Fig.1 and 2 on Page 3).
 - D. Remove paint from ends of each mounting foot and from mounting surface.
 - E. Clean areas of paint removal to remove all traces of dust.
 - F. Place M10-1.5mm threaded bolt into mounting foot to protect the threads before welding.
 - G. Mount the camera fixture to the prepared area. Tack weld each mounting foot to the surface, then unbolt the camera fixture from each mounting foot. Finish welding a 6.35mm weld on each 25.4mm (short) end of each mounting foot.
(See Fig.1 and 2 on Page 3).
 - H. Prime the surface with a corrosion inhibiting primer made specifically for metal (Recommended thickness 1.0 mils Min. \ 2.0 mils Max.).
 - I. Apply paint topcoat per manufacturer's recommendation. (Paint should be rust and corrosion resistant made specifically for metal.)
(Recommended thickness 1.5 mils Min. \ 3.0 mils Max.).
 - J. Remove M10-1.5mm threaded bolt from each mounting foot. Re-align enclosure with M10-1.5mm threaded bolt holes, insert and torque bolts in place as recommended.

Cable and Gland Installation:

1. Ensure the correct packing gland is sized for installed cables. (Refer to Fig.5 on Page 4 of this document for Packing Gland Information).
2. Remove and retain M6 locking screw from main housing assembly. (See Fig.4 on Page 4).
3. Remove lens assembly by unthreading from main housing (Set aside in secure location to prevent damage).
4. Remove camera from housing by removing two M4 pan head screws. Pull camera unit from housing (Set aside securely).
5. Install cable through packing gland, and gland entry on housing. (Refer to Packing Gland Information - Fig.5 on Page 4, installation instructions). (For cable gland entries not used, stopper plugs must be installed. See Fig.5 Page 4).
6. Connect ground wire to internal ground point by removing M4 button head screw located inside main housing assembly. Use the #10 ring terminal provided, crimp onto ground wire, and clamp into place at the grounding point using M4 button head screw.
7. Connect incoming cable to wires on back of camera unit (See Fig.3 on Page 3).
8. Reposition camera into housing assembly by aligning slots in camera holder with screw holes in the housing assembly. Secure in place using the two M4-0.7 X 6mm pan head screws. Position so that yellow or red mark on camera plate is top of camera view.
9. Re-install lens ring assembly onto housing assembly.
10. Insert the M6-1.0 X 14mm socket head screw to lock lens ring assembly in place on housing assembly.
11. Attach assembled light fixture to the previously welded mounting feet using the M10-1.5 X 50mm socket head screws and M10 lock washers.



214 INDUSTRIAL PARK ROAD
BEAVER, WV 25813-USA
PHONE: 304-252-6243 \ FAX: 304-252-6292

Maintenance Instructions:

This electrical apparatus enclosure when installed in hazardous locations has design features that make it operationally safe under normal conditions. In order to ensure the apparatus remains serviceable the following points should be attended to periodically. The period between inspections is not ascribed, but should be determined by the end user in accordance with environmental conditions affecting the apparatus as installed. An initial inspection after 12 months of use is suggested.

Replace assembly if any of the following conditions are found during inspections:

1. Fractures, cracks, or distortions.
2. Damaged, exposed wires.
3. Glands not securely tightened.

Ensure the assembly certification label is present and legible. Confirm by use of the unit markings and labels that the enclosure is installed in a suitable area.

Special Conditions for safe Use:


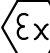
1. The lens cover shall be fully tightened and secured with M6-1.0 X 14mm socket head cap screw before equipment is energized.
2. The equipment shall not be opened unless the equipment is de-energized and the area is known to be non-flammable.
3. Must only be fitted with suitably approved (ATEX/IECEx) cable glands or blanking plugs that are approved as Ex d I Mb or Ex db I Mb with a minimum IP rating of IP66 and suitably sized for the cabling used. All unused openings must be fitted with a blanking plug.
4. Cabling used to connect to the equipment must be suitable for use in the environment per IEC / EN60079-14.
5. Enclosure must be bonded to ground both internally and externally with suitably sized conductors (EN / IEC 60079-0, cl. 15.3).

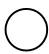

Technical Data:

| | |
|-----------------------------|--|
| Cable Entries: | Two entries with M25-1.5mm Class 6H Gland Openings. |
| Lens Ring and Locking Bolt: | Lens Ring M72-2.0mm Class 6g / 6H threads and Bolt M6-1.0mm x 14mm Long Socket Cap Screws, Grade A2 stainless steel, Property Class 70. WARNING DO NOT OPEN WHEN ENERGIZED. CABLE ENTRIES: M25-1.5mm CLASS 6H THREADED GLAND OPENINGS. |

Labels:

Part will be Etched, Engraved, or Nameplated with the following:

| | | |
|---|--|---|
| ELGIN LIGHTING, LLC 214 INDUSTRIAL PARK ROAD BEAVER, WV 25813-USA | | MODEL No. <u>EX-36580-XX</u> SERIAL No. <u>XXXXXX-XX</u> DATE OF CONST. <u>XX-XXXX</u> IP RATING. <u>IP 66</u> |
|  2776 UK CA 2503 |  I M2 Ex db I Mb Ta = (-20°C ≤ Tamb ≤ 50°C) | CERTIFICATION No. CML 20ATEX1231X CML 23UKEX1323X IECEx CML 20.0145X |

| | | |
|--|--|---|
| WARNING | | |
| DO NOT OPEN WHEN ENERGIZED | | |
|  | |  |
| LAMP-28V, 55W MAX. / STROBE-2.8V, 4.5W MAX. METER-24V, 1W MAX. / LED-40V, 12W MAX. CAMERA 12V, or PoE is 44 - 57 V, 3.12W MAX. | | |

Grounding: External connection M10-1.5mm threaded pad, Use a M10-1.5mm X 50mm long stainless steel cap screw, M10 lock washer and ring crimp terminal. Max. 40 Amp.
Internal connection M4-0.7mm internal threaded hole, Use a M4-0.7mm X 6mm long button head screw and ring crimp terminal. Max. 18 Amp.



214 INDUSTRIAL PARK ROAD
BEAVER, WV 25813-USA
PHONE: 304-252-6243 \ FAX: 304-252-6292

FIG. 1

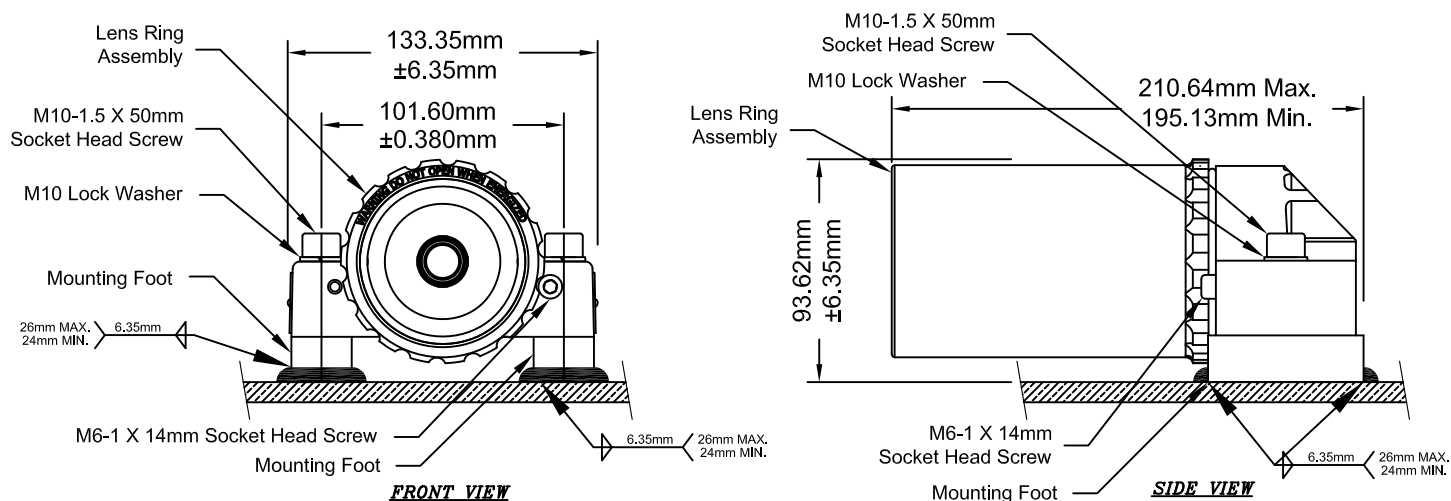


FIG. 2

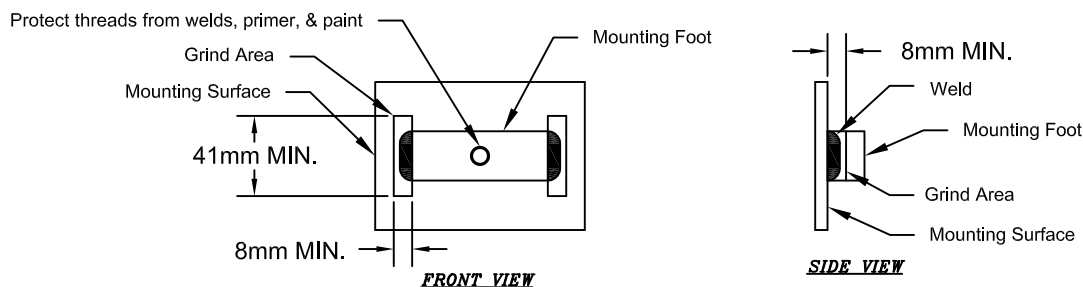
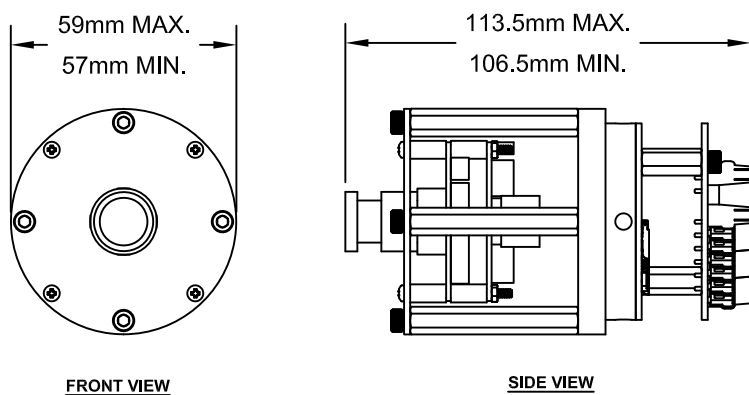


FIG. 3



TERMINAL BLOCK DESIGNATION FOR
POWER OVER ETHERNET

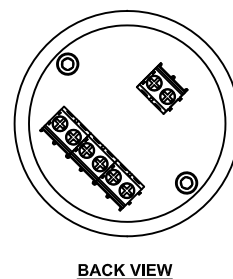
TERMINAL 1
(1) PoE +
(2) PoE -
(3) TX +
(4) TX -
(5) RX +
(6) RX -

TERMINAL 2
(1) NONE
(2) NONE

TERMINAL BLOCK DESIGNATION FOR
POWER AND ETHERNET

TERMINAL 1
(1) NONE
(2) NONE
(3) TX +
(4) TX -
(5) RX +
(6) RX -

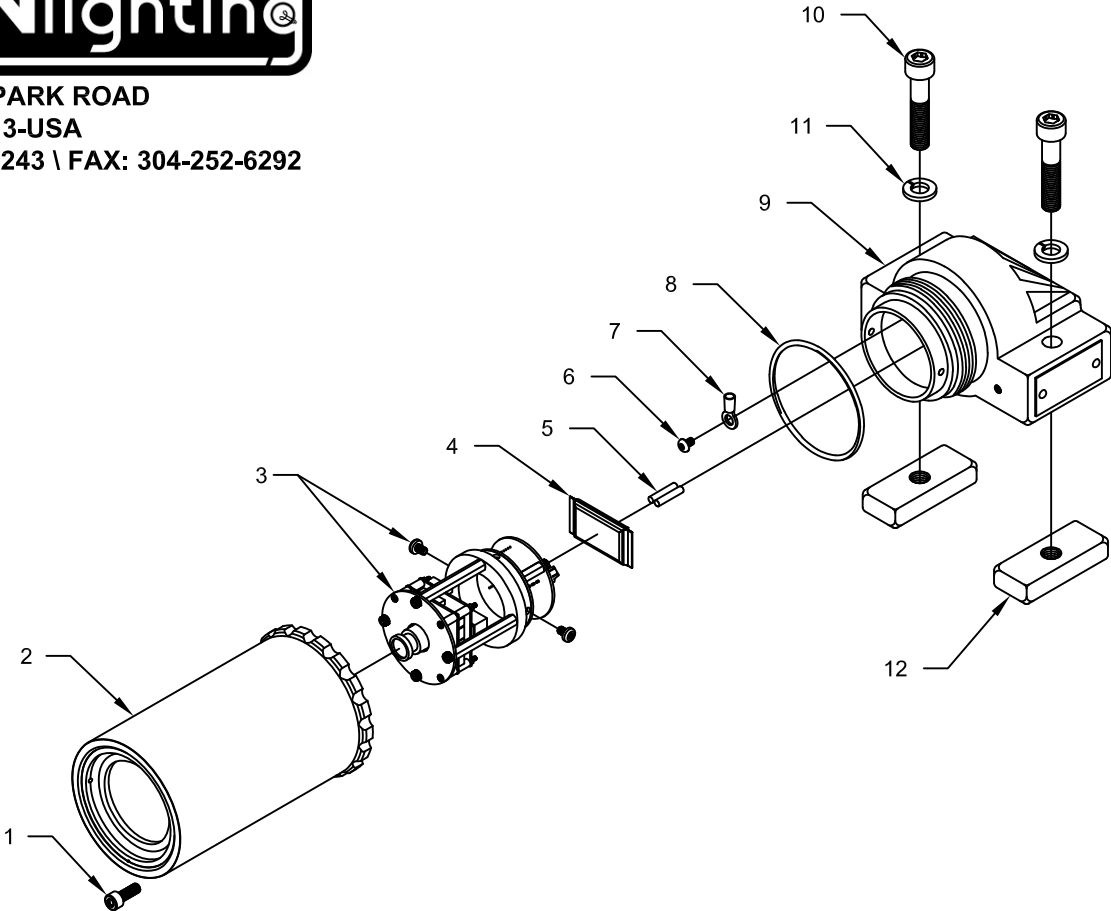
TERMINAL 2
(1) 12 V +
(2) 12 V -





214 INDUSTRIAL PARK ROAD
BEAVER, WV 25813-USA
PHONE: 304-252-6243 \ FAX: 304-252-6292

FIG. 4



9020-36580-16 IP / PoE camera fixture with two M25 threaded gland openings.

| Item | Qty. | Part Number | Description |
|------|------|---------------|-------------------------------|
| 1 | 1 | 1041-50208 | M6-1 X 14mm Socket Head Screw |
| 2 | 1 | 9013-36815-2 | Lens Ring Assembly |
| 3 | 1 | 9021-37403-21 | IP / PoE Camera Assembly |
| 4 | 1 | 1038-33991 | Desiccant Bag |
| 5 | 2 | 1035-20304-1 | Butt Splice |
| 6 | 1 | 1041-50242 | M4 Button Head Screw 6mm Long |

| Item | Qty. | Part Number | Description |
|------|------|--------------|---------------------------------|
| 7 | 1 | 1035-20301-2 | #10 Ring Terminal |
| 8 | 1 | 2019-31137-1 | 70mm Silicone O-Ring |
| 9 | 1 | 9023-36810-4 | Main Housing with Tags |
| 10 | 2 | 1041-50210 | M10-1.5 X 50mm Socket Head Bolt |
| 11 | 2 | 1041-50211 | M10 Helical Spring Lock Washer |
| 12 | 2 | 2021-36662-2 | Mounting Foot |

FIG. 5

1. Opening in the enclosure must be fitted with ExCB or Notified Body suitably certified blanking devices or cable devices that carry the certification marking Ex d I Mb or Ex db I Mb with a minimum IP Rating of IP 66 or better.
2. 8 minimum threads engaged.
3. Only one Adaptor or Reducer shall be used per cable entry.
4. Use Manufacturer Installation and Instructions.

